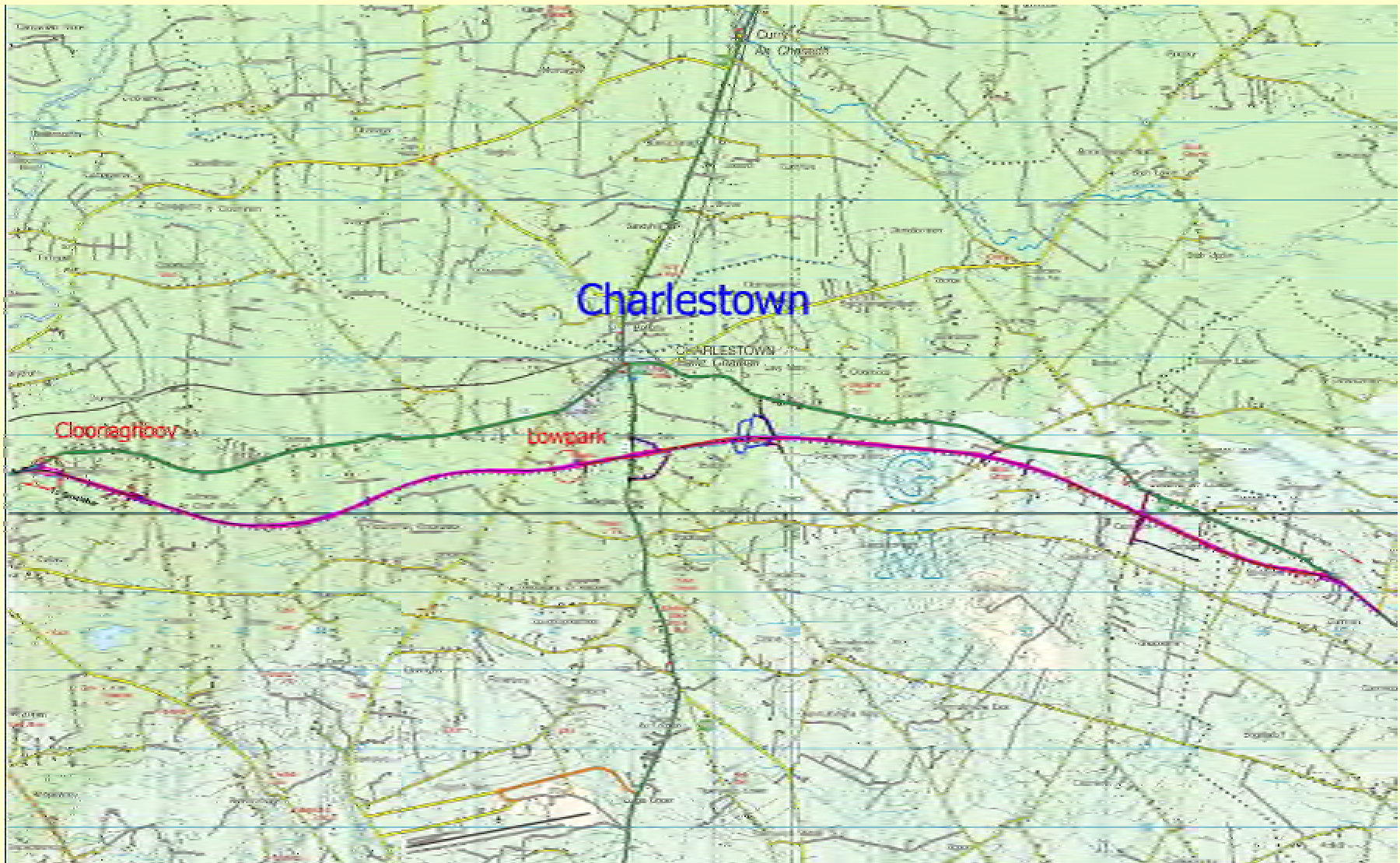


Archaeological programme in advance of the N5 Charlestown Bypass

- **Resolution of known sites (RMPs) and testing of potential sites listed in the EIS.**
- **Centre line testing with offshoots every 15m staggered.**
- **Surveying of vernacular structures.**
- **Resolution of newly identified sites.**
- **Monitoring of topsoil removal by contractors.**



Location of the new N5 Charlestown bypass

Vernacular Architecture





Centre line testing on the N5 Charlestown bypass.



Top: Neolithic Burnt spread - Ballyglass td.

Far left: Burnt flint arrowhead from a Fulacht Fiadh Cloonfane Td.

Left: Silt Stone Arrowhead from, Ballyglass Td.





**Early
Medieval
Corn
Drying
Kiln
Ballyglass Td.**



Stone-lined and partially stone-lined troughs from *fulachta fiadh* in Currinah, Cashelduff and Cloonmeen West Townlands





Half-sectioned *fulacht fiadh* mound in Currinah townland



View of *fulacht fiadh* mound Fauleens Townland

Fulacht Fiadh Sonnagh Td



**Mound, unusual trough base
and animal bone, probably wild
Boar teeth.**



Fulacht Fiadh, Sonnagh td.



Burnt mound, trough and platform



Lithic assemblage from Sonnagh Townland, A020/029





Structural foundation
trenches dated to the
Early Neolithic
(adjacent to the Sonnagh
fulacht fiadh)



Wooden troughs from Sonnagh townland





**Bi-conical tin bead from
the outer moss lining of
one of the Sonnagh
wood-lined troughs**



Wood-lined troughs from Fauleens and Currinah Townlands



Split-oak plank trough from Fauleens townland



Split-oak plank trough from Fauleens townland





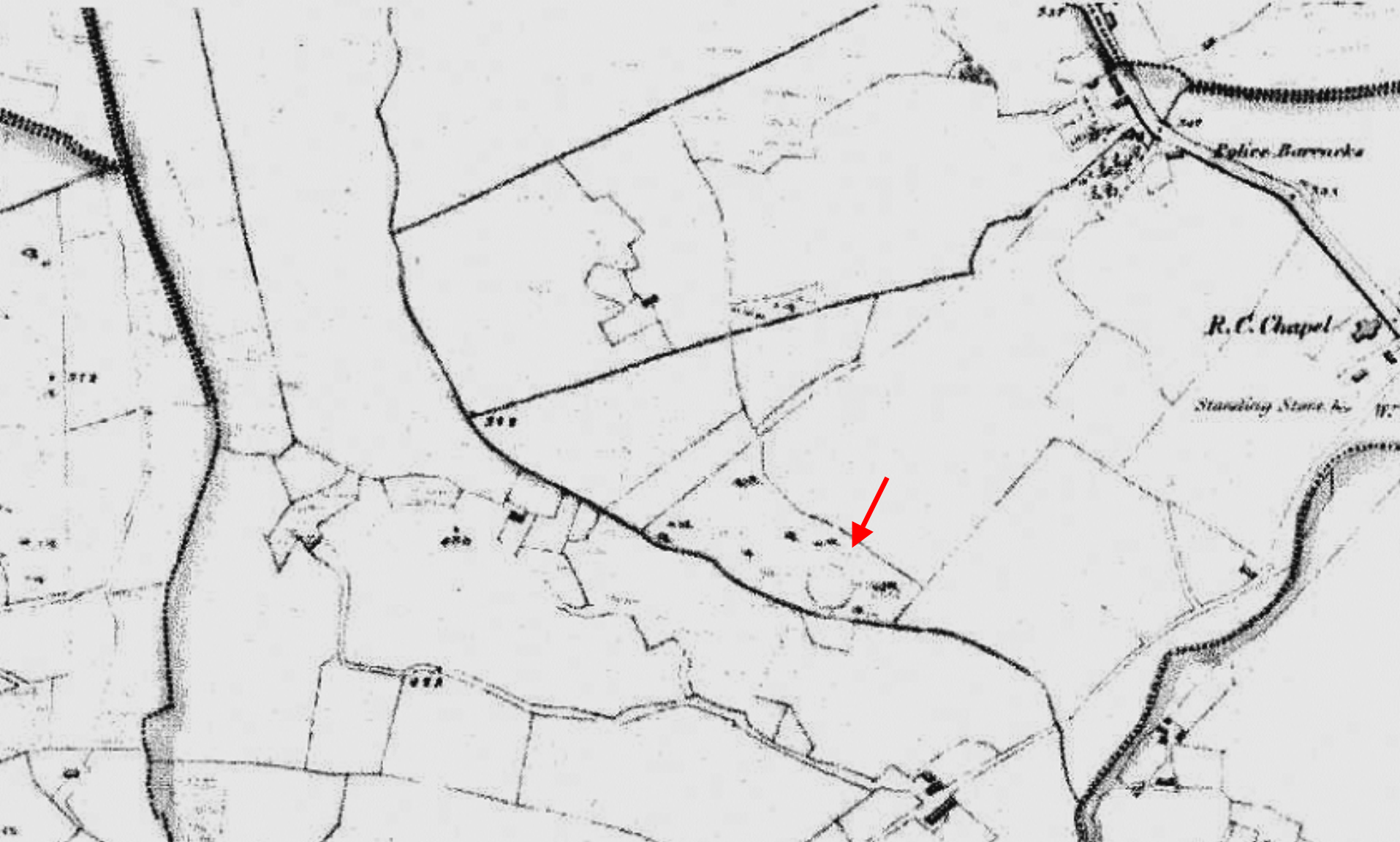
Cloonaboy Ringfort, Pre excavation



Bivallate Ringfort, Cloonaghboy td.

**Quern stone and souterrain in the
Cloonaghboy Bivallate Ringfort, td.**

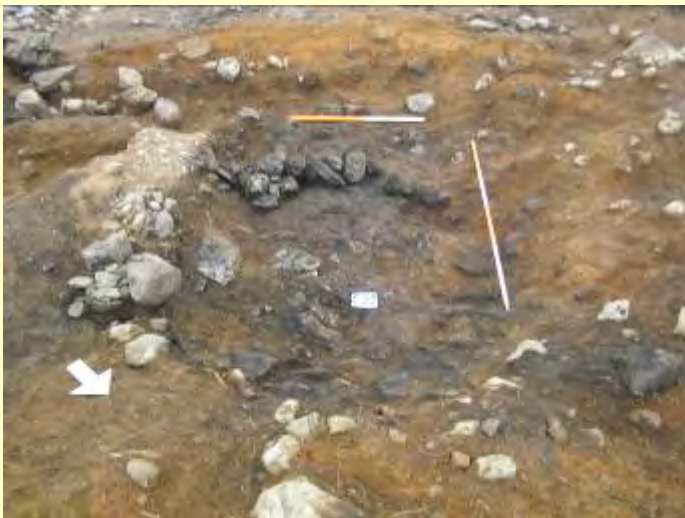




First Edition OS map showing the Cashelduff 'Enclosure'



Pre excavation view of the Cashelduff Site



**Disturbed
Neolithic
Site at
Cashelduff
with selection
of lithics**

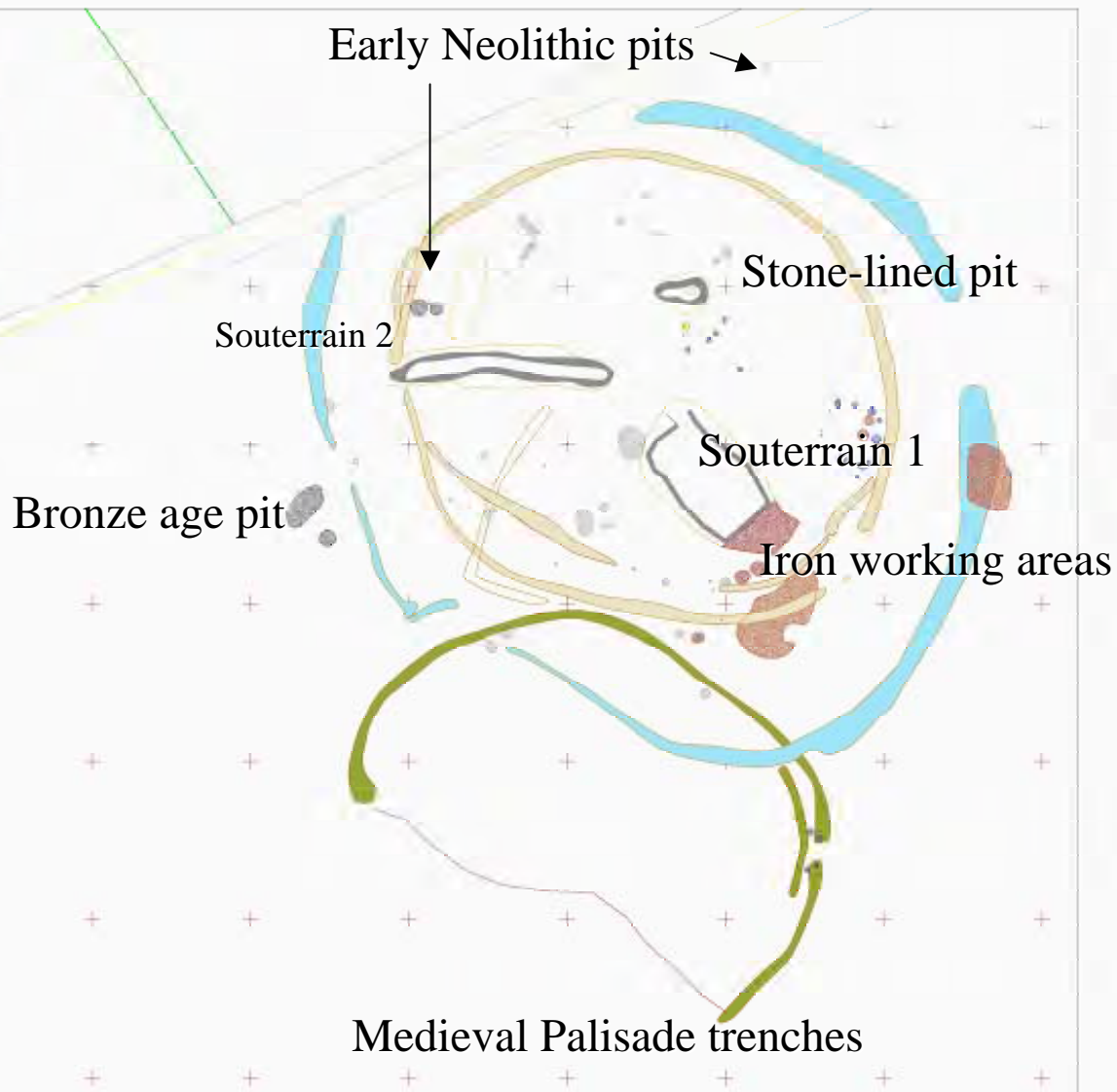
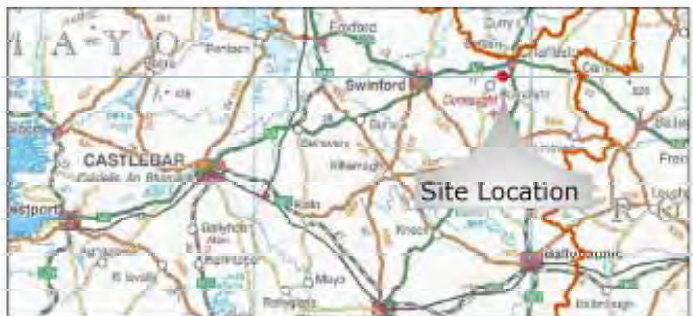




Aerial view of
Lowpark enclosure



Aerial view of
Lowpark enclosure



Composite view of the Lowpark Enclosures



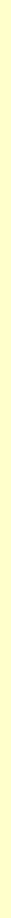


Souterrain 2
Lowpark townland

Lowpark Td. stone-lined pit



Souterrain 1, Lowpark td.

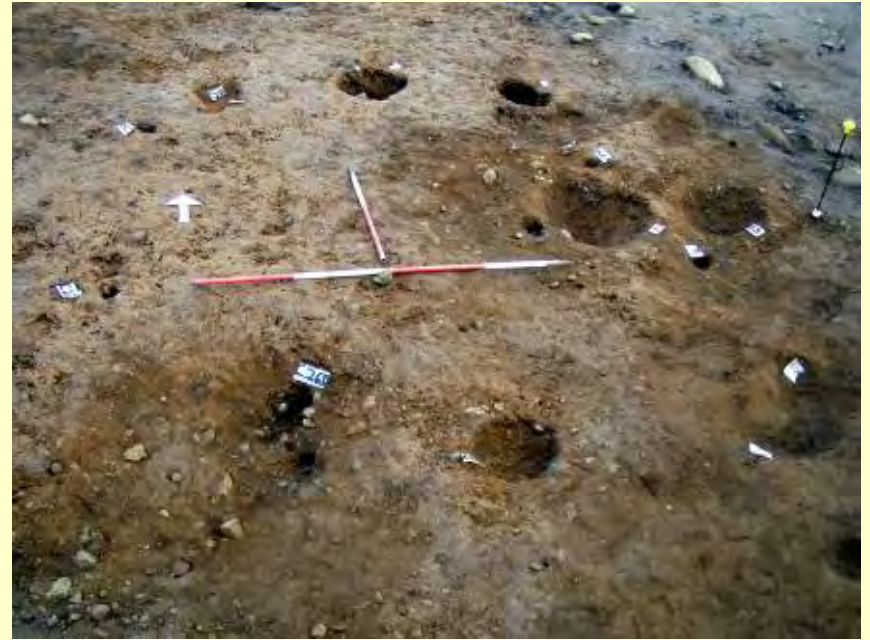




Souterrain 1, Lowpark td.

**Souterrain 1,
Lowpark td**





Early Medieval Iron working areas, Lowpark townland



Ironworking from Lowpark



Primary and secondary smithing slags



Tap slag



Corroded iron artefacts



Large stone artefacts from Lowpark townland



Artefacts from Lowpark





**Gold filigree panel from
lowpark townland and
similar panel from Lagore
Crannóg, Co Meath**



From 'The Work of Angels' - Susan Young



Lithics from Lowpark townland



**Early Neolithic pottery
rim sherd**



**Decorated Sherd of
Bronze Age 'food vessel'**

Minature polished stone axe-heads from Lowpark townland



Late Neolithic pottery vessel in situ in Lowpark townland



Pit containing about 1600 sherds of Late Neolithic pottery in Lowpark





Selection of Late Neolithic pottery from Lowpark townland